



# International Ecological Footprint Learning Lab

## Newsletter – January 2025

The [International Ecological Footprint Learning Lab](#) is pleased to share the second newsletter for 2025. If you do not want to receive future newsletters, please let us know.

### Upcoming Events

#### **Launch of the 2025 Edition of the National Ecological Footprint and Biocapacity Accounts**

This Earth Day on April 22, 2025, the launch of the 2025 Edition of the National Ecological Footprint and Biocapacity Accounts will take place virtually on Zoom. The National Accounts include data for 244 countries and the world from 1961 until 2024, the latest year of the data! This yearly launch is a time to celebrate the success of the team of data analysts in producing another edition with new and updated data. This is the first edition to be collaboratively authored by researchers at York University and the University of Iceland, highlighting the strength of our international partnership.

National Accounts Launch: April 22, 2025, at 12 pm EST = 4 pm GMT. [Register here](#).

#### **Intergenerational Climate Café, for York University students**

The York University Retirees Association is inviting all York University students to the Intergenerational Climate Café taking place at York University in the Health, Nursing, and Environmental Studies (HNES) building, room 140 on April 22 from 10:30 am to 12:00 pm. Register for the Climate Café, [here](#).



## Research

### IEFLL Research Spotlight News at York University

**Andrew Reeves**, IEFLL postdoctoral researcher at York University, was featured in a research spotlight highlighting his research on modeling, ecological footprint, and Low Grow SFC. Read the spotlight [here](#).

**Peri Dworatzek**, IEFLL PhD student at York University and Partnership Coordinator, was also featured in a research spotlight, showcasing her research supervised by **Eric Miller** creating ecological footprint and biocapacity accounts for Ontario municipalities. Read the spotlight [here](#).

## Recognitions

### Research Award from the Icelandic Centre for Research

**Petra Dimitrova Toneva**, a master's student at the University of Iceland in the ecological footprint training program successfully received the award for the student innovation fund from the Icelandic Centre for Research. Congratulations Petra! This award will contribute to her future research on ecological footprint and biocapacity methodologies.





## Knowledge Mobilization

### IEFLL Community Scaling Workshop

At the end of March, members of IEFLL hosted a virtual workshop on community scaling. **Eric Miller**, Director of the Ecological Footprint Initiative and Co-Director of IEFLL, presented details about the back-end data and calculations needed for ecological calculators with examples of two projects, one with a group of Toronto Parishes and one with the Metis Nation of Ontario. **Dr. Katie Kish**, Assistant Professor at Cape Breton University and IEFLL Researcher, presented on the community-based participatory methodological approaches used in those two projects that Eric spoke about. Anne Kok and Dr. Wolmet Barendregt from the Netherlands presented their research that recommends what the ideal ecological footprint calculator looks like for different types of people. **Peri Dworatzek**, York University PhD student and IEFLL Partnership Coordinator, organized and moderated the workshop. Audience members attending from around the world allowed for interesting discussions on how to account for inequality, how to communicate differences, and how/if behaviour change is possible. We will soon post an edited recording of the workshop on the [IEFLL YouTube account](#).



**Community  
Scaling of  
Ecological  
Footprint**

Virtual Workshop hosted by the  
International Ecological  
Footprint Learning Lab (IEFLL)  
March 20, 2025

 [iefll@footprintpartnership.net](mailto:iefll@footprintpartnership.net)  
 [www.footprintpartnership.net](http://www.footprintpartnership.net)

 Anne Kok,  
User Experience  
Designer and  
Business Analyst

 Dr. Wolmet  
Barendregt,  
Human-Computer  
Interaction  
Specialist

 Dr. Katie Kish,  
Assistant  
Professor at Cape  
Breton University

 Eric Miller,  
Director of the  
Ecological  
Footprint Initiative

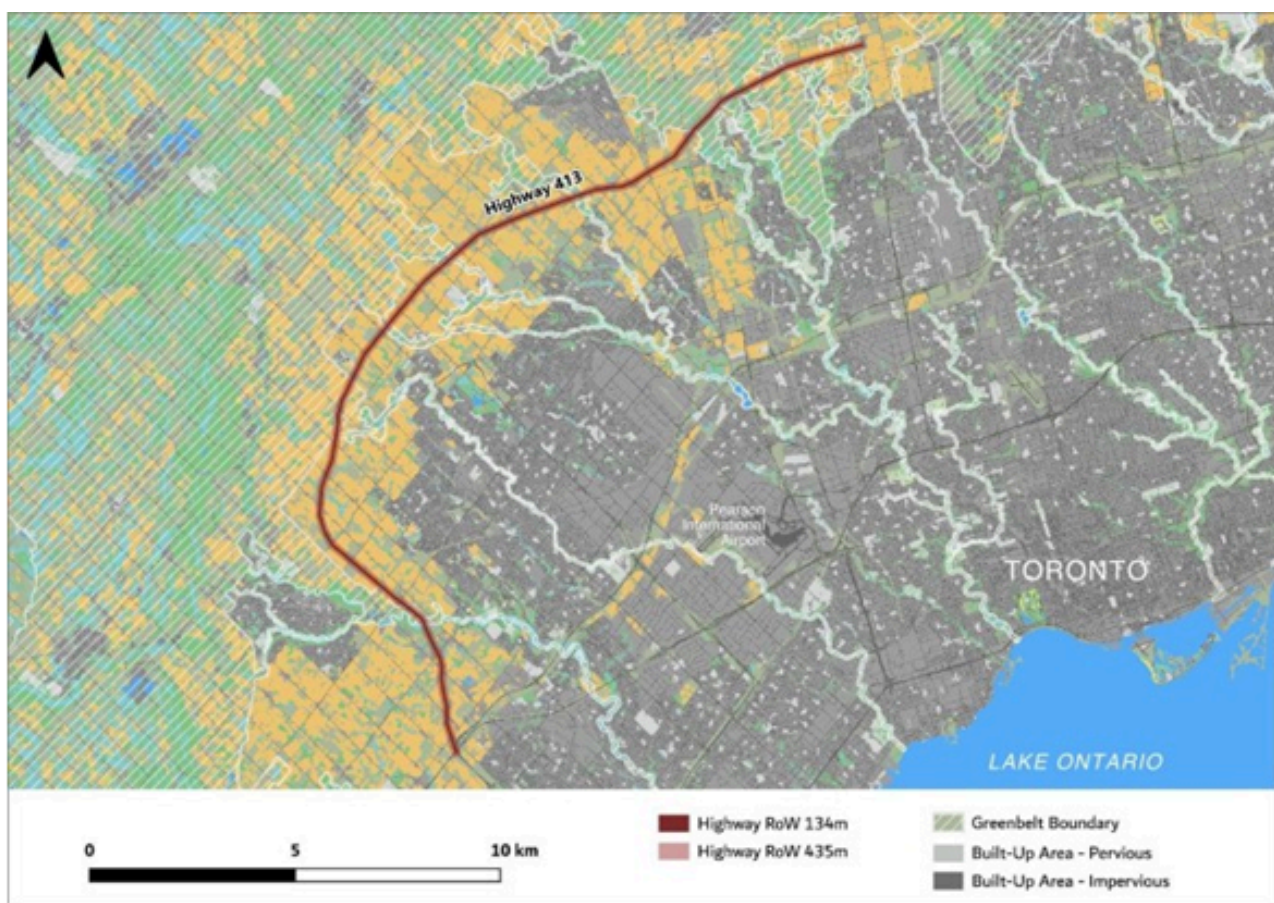
Moderated by Peri  
Dworatzek,  
PhD Student and  
Partnership  
Coordinator for  
IEFLL





## Mapping the Ecological Footprint of a new expressway in Ontario

The Ontario provincial government is planning a new expressway through primarily rural lands to the north of the existing Toronto urban area. The plan has been opposed by environmental and sustainable city advocates for its expected effects in reducing biodiversity, encouraging urban sprawl, and destroying farmlands, woodlands, and wetlands. Ecological Footprint analysis offers valuable tools for understanding and picturing the impact of the new highway. This application of Ecological Footprint was the subject of a recent class in the Ecological Footprint Informatics class, offered jointly by York University and the University of Iceland, taught by **Eric Miller**, Co-Director of IEFL. Read the full article on the [IEFL website](#).





## **Dr. Trevor Hancock: A Visionary in Population Health and Sustainability**

In just how bad a state are we leaving our planet for future generations? Is it true that we currently live in a “toxic soup” of industrial chemicals? How do we get Canadians to truly care about their ecological footprint? **Henry Challen**, Masters in Environmental Studies student at York University, had been wrestling with these deeply troubling questions during the weeks leading up to December 10th, 2024, when he spoke with Dr. Trevor Hancock, a pioneer in Canadian public health and sustainability. Read the full article on the [IEFLL website](#).

## **Peter Victor presentation to the World Bank Group**

Earlier this month, **Peter Victor**, EUC Professor Emeritus and Co-Director of the International Ecological Footprint Learning Lab (IEFLL), presented to the World Bank Group and an invited audience about his book, Herman Daly’s Economics for a Full World His Life and Ideas. The full presentation can be watched [at this link](#).

## **Undergraduate Workshop hosted by the Ecological Footprint Initiative at York University**

In February, the Ecological Footprint Initiative (EFI) hosted their first ever undergraduate data workshop. This half-day event introduced undergraduate students to the concept of ecological footprint and biocapacity, how to interact with the data in Excel, and possibilities for research related to topics students were interested in. This workshop was organized and led by **Eric Miller**, Director of EFI, **Kiona Lo**, Senior Data Analyst at EFI, **Kaitlin Pal**, Undergraduate Research Assistant at EFI, and **Peri Dworatzek**, Partnership Coordinator for the IEFLL partnership. Undergraduate students participated in the data analysis research questions and learned ways they can include ecological footprint data for their projects and research.





## Meet an IEFL Member



**Andrew Reeves**, IEFL Postdoctoral researcher at York University, is conducting exciting research to integrate ecological footprint into a stock-flow consistent ecological macroeconomic model, LowGrow SFC. Andrew received his PhD in astrophysics studying the formations of galaxies, and now he is using his expertise in mathematics and statistical analysis to include land, terrestrial that is, into economic modeling. Read more about Andrew's work in his profile, [link here](#).





## Partner Visits

### Upcoming IEFL partnership visits to Iceland and Norway

In June, several students and staff of the IEFL partnership will be traveling to Iceland to connect with Icelandic partners and students. There will be a number of events, including partner site visits, a research symposium, and a presentation from IEFL members to the University of Iceland. If you are curious to hear more about the schedule for the IEFL Iceland visit with a potential interest of attending, with an understanding that individuals are responsible for their own costs, please contact [iefl@footprintpartnership.net](mailto:iefl@footprintpartnership.net)

Additionally, some members of the IEFL partnership have been accepted to present at the International Society for Ecological Economics conference in Oslo, Norway from June 24 to June 27. If you are attending the conference and would like to connect in Oslo, please contact [iefl@footprintpartnership.net](mailto:iefl@footprintpartnership.net)

## Submit to the IEFL Newsletter

Have something you want to share? [Fill out this online form](#) to share announcements, publications, and events in our next newsletter.

Explore our website: <https://www.footprintpartnership.net/>

The International Ecological Footprint Learning Lab partnership newsletter is edited by **Peri Dworatzek**, Partnership Coordinator of IEFL. If you have any questions or comments, please email: [iefl@footprintpartnership.net](mailto:iefl@footprintpartnership.net)